

THE BATTERY RECYCLING JOURNEY

What happens to your batteries when you recycle?



IT STARTS WITH COLLECTIONS



You can find a Call2Recycle® battery collection box at many drop-off locations across Canada including at leading retailers & recycling depots.

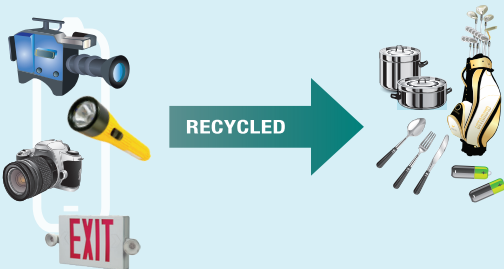
Call2Recycle collects and recycles:

- Nickel Cadmium (Ni-Cd)
- Nickel Metal Hydride (Ni-MH)
- Nickel Zinc (Ni-Zn)
- Lithium Ion (Li-Ion)
- Small Sealed Lead Acid (SSLA/Pb)
- Single-Use/Alkaline
- Lithium Primary

RECHARGEABLE BATTERIES

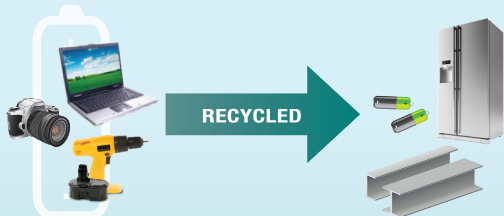
Nickel (Ni)

Used Ni-Cd, Ni-MH and Ni-Zn batteries are recycled into new products such as silverware, pots & pans, golf clubs and new batteries.



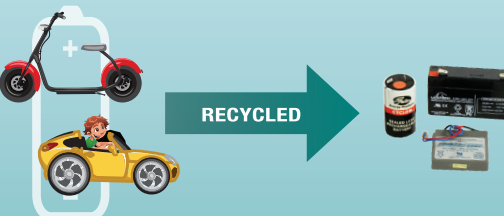
Lithium (Li)

Used Li-Ion rechargeable batteries are recycled into steel, stainless steel and new batteries.



Lead (SSLA/Pb)

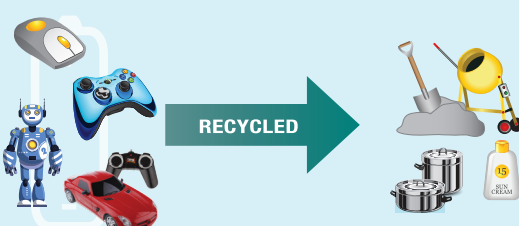
Used SSLA/Pb batteries are recycled into new Pb-based batteries.



SINGLE-USE BATTERIES

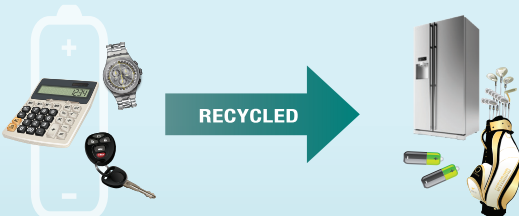
Alkaline

Used alkaline batteries are recycled into steel and new products such as sun screen and concrete aggregate.



Lithium Primary

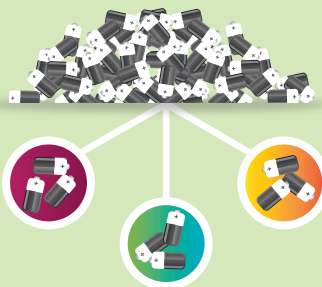
Used Li-based primary batteries are recycled into new products such as silverware, stainless steel, golf clubs and new batteries.



SORTING & PROCESSING

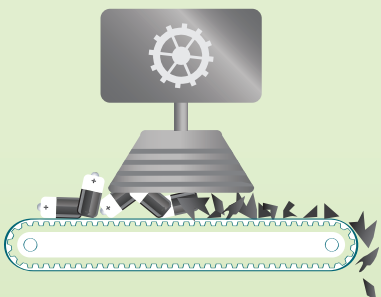
Battery Sorting

Collected batteries are sorted according to weight and battery type and sent to the recycling plant for processing.



Battery Processing

Processors at the recycling plant extract chemicals and metals to be used in the manufacture of new products.



Learn more at www.call2recycle.ca
and find a drop-off location near you
at www.call2recycle.ca/locator



call2recycle®